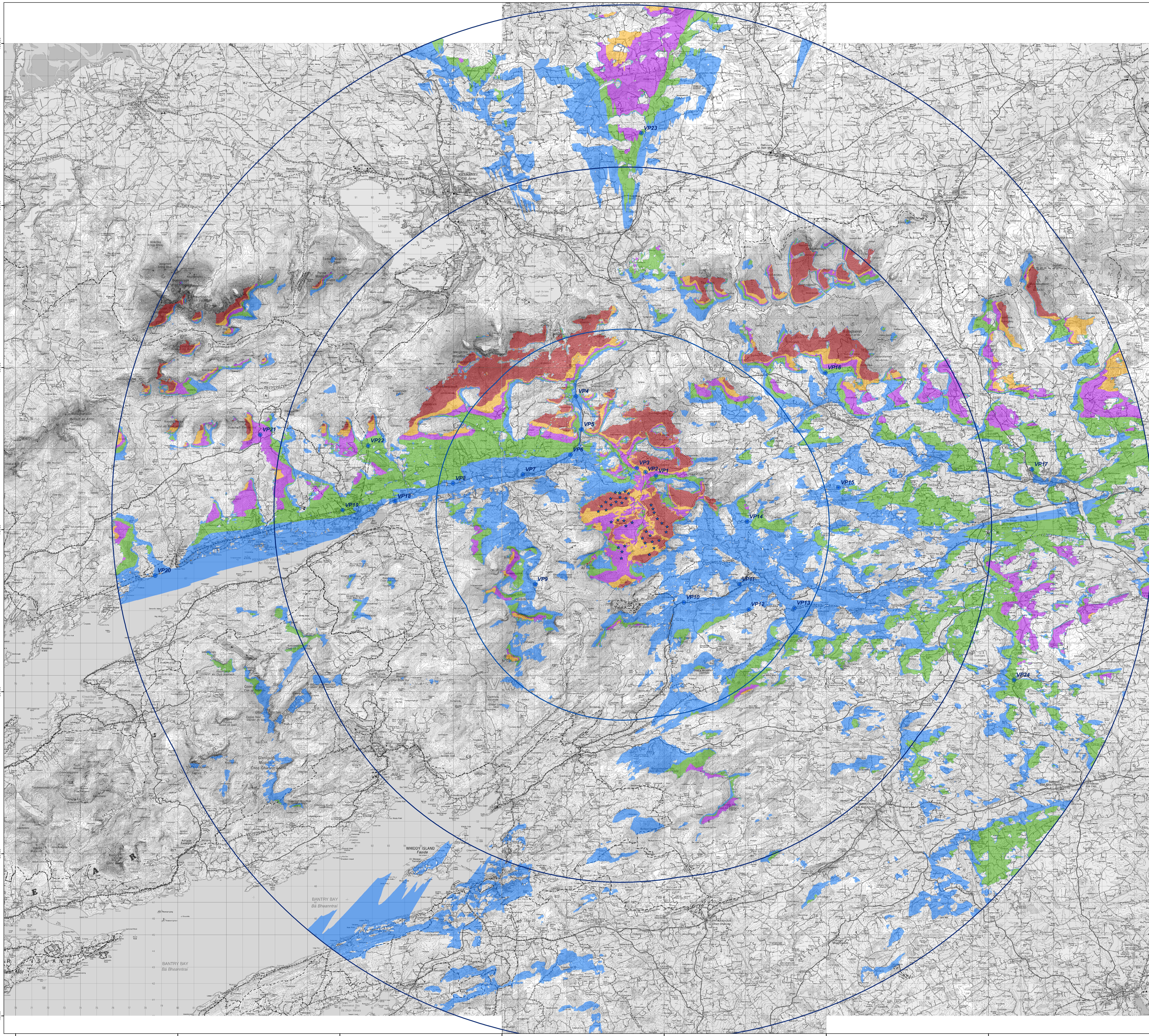
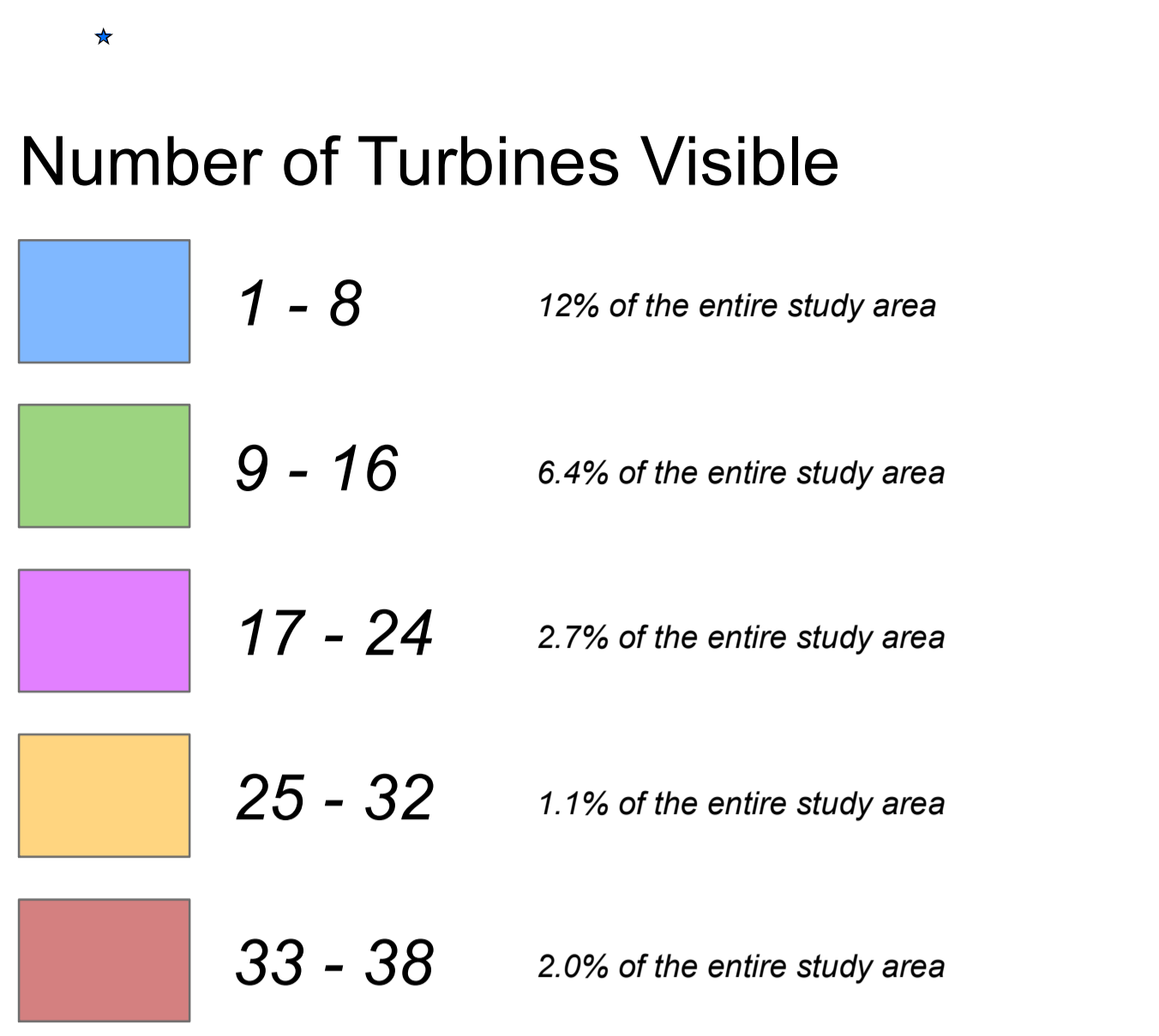


Zone of Theoretical Visibility (ZTV) map indicating the areas that have a potential view of the proposed Grousemount Wind Farm turbines - calculated to tip height (126m)



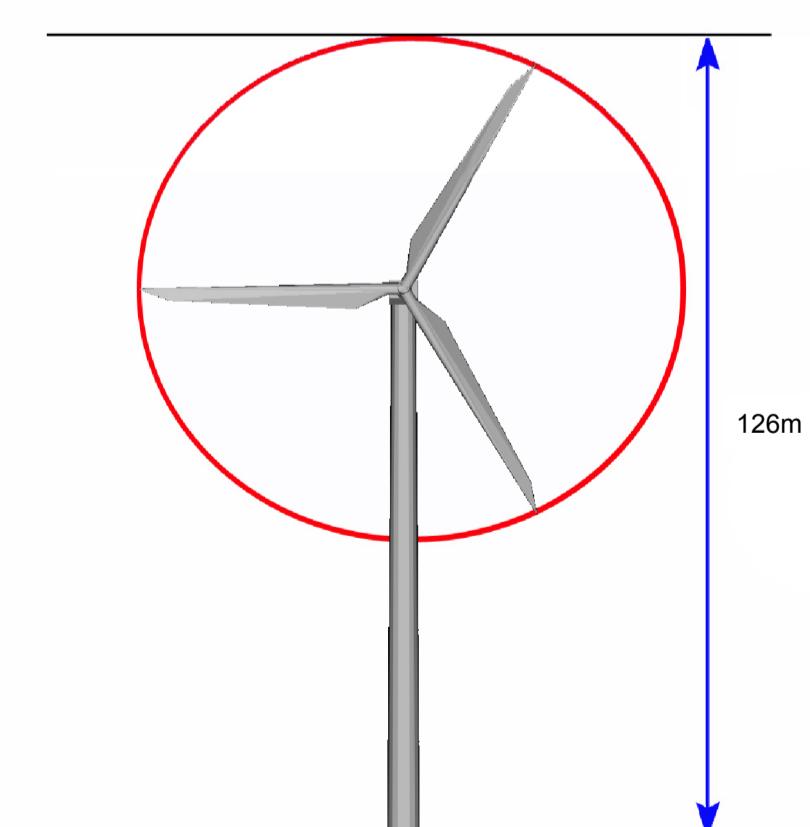
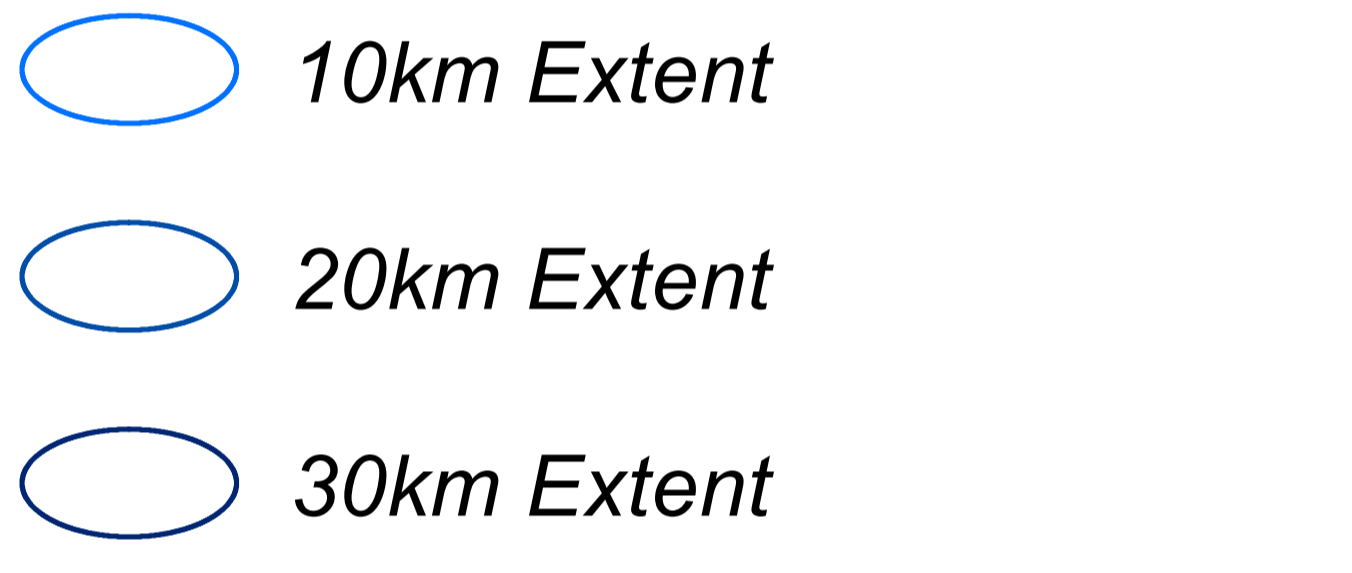
Proposed Grousemount Turbines



75.8% of the entire study area to 30km will not have any view of the blade tips of the proposed Grousemount Wind Farm

Photomontage Viewpoints

Proposed Grousemount Extents



This ZTV map has been calculated such that a turbine registers as being theoretically visible to observers in the surrounding landscape once there is an unobstructed line of sight to its blade tip.
 Observer Height assumed: 2m to eye-level height
 Blade Tip Heights: 126m

Note: This ZTV map is calculated for landform screening only and does not take account of the significant screening effects of vegetation (hedgerows, trees) and buildings inherent across this study area.